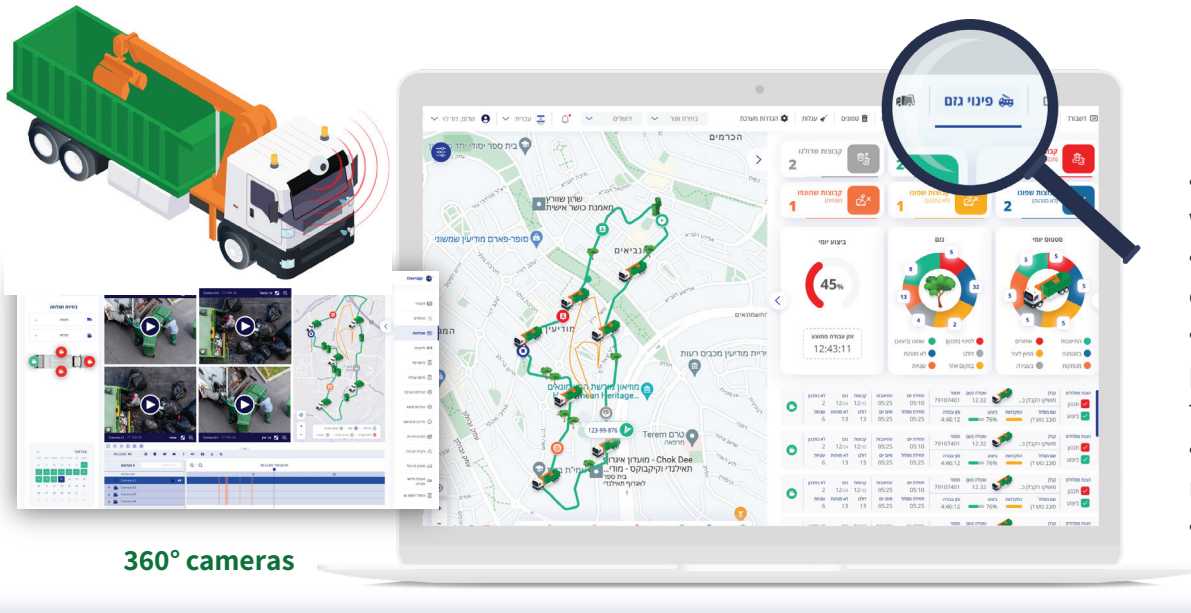


A control system for pruning garbage and hidden bins



Main benefits:

- Reporting and control of work areas
- Quantity and weight collected
- Control of the types of pruning (integration of AI technology in the future)
- Daily / monthly summary reports.
- Admin dashboard

360° cameras

Making Clean Cities smarter

Customized interfaces and integration according to customer needs.

A variety of reports
 - Filtered by dates or contractor
 - notifications and abnormal reports
 - Payment reports to the contractor

360° camera system
 A special camera on the crane to document the hoisting.
 - Accurate weight in motion on the crane.

A central control system that includes a **variety of tools for management and control**: planning versus execution, exceptions, work arrangement and activity hours, attendance.

A dynamic **GIS map** that includes real-time location data and yields of brooming trucks

Optimization of trimming collection processes according to fixed or changing points

Smart clean cities



The system is supported by the chief scientist of the Israeli Innovation Authority

About Clean2go



Clean2go is a smart central management system, in the cloud, that optimizes and monitors the entire **cleaning and waste collection processes** in different streams, the system integrates an administrative "Dashboard" that includes an information dashboard, metrics and outputs. Providing tools for route planning and alerts on unusual events, data analysis, forecasting and recommendations in real time. Including weighing on the move, providing a **ONE STOP SHOP for cleaning management and waste collection** in municipal authorities, as part of the "smart cities" vision and for the **benefit of improving the service to residents**.

About Ok2go



The company was established in 2002, engaging in cloud solutions for a variety of applications for managing and controlling employee hours reports. The company developed and successfully implemented the system in about 230 authorities in the security departments. The company provides employee management solutions to thousands of businesses and over 100,000 users including leading companies and organizations

*Some of the capabilities are under development, *Some of the services are strictly dependent on the truck hardware

*The system is modular and you can take some or all of the services